

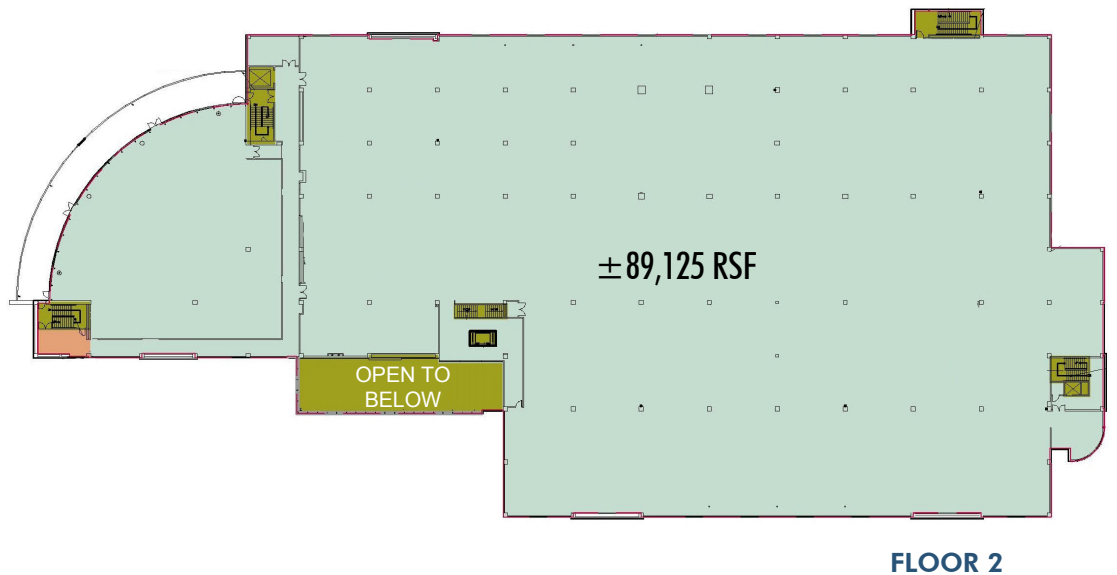
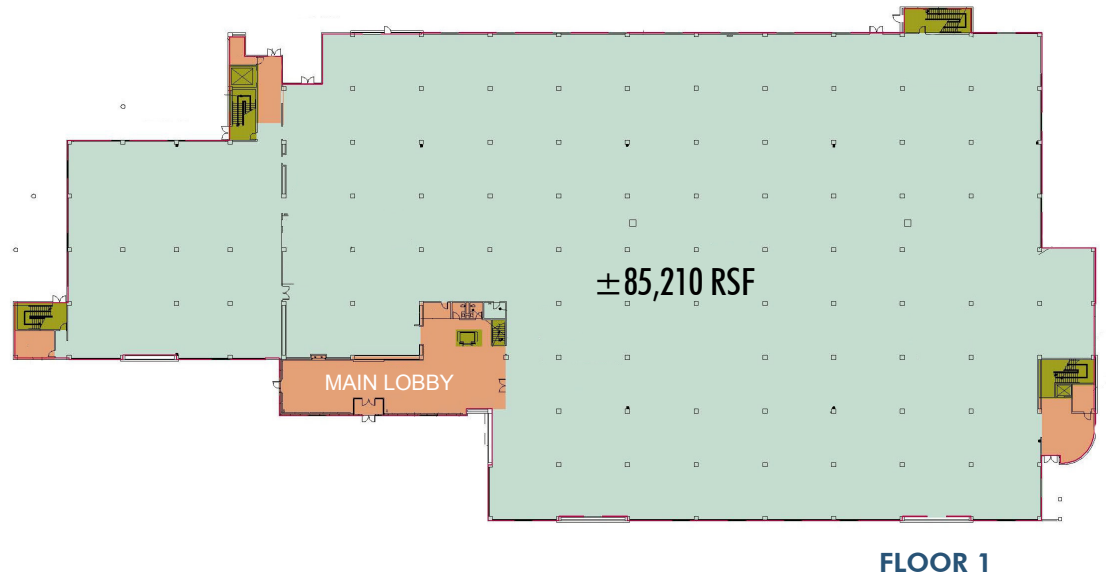
**NOW  
AVAILABLE**



# South Hill Business + Technology Center

SOUTH BUILDING :: 1015 39<sup>TH</sup> AVENUE SOUTH, PUYALLUP, WASHINGTON

## AS-BUILT:



**FOR MORE  
INFORMATION  
PLEASE CONTACT**

### **John Bauder**

Vice President

+1 253 596 0047

john.bauder@cbre.com

### **Andrea Peterson**

Senior Associate

+1 253 572 6355

andrea.peterson@cbre.com

## ROOM TO GROW:

The South Building is expandable and offers tenant's flexibility for growth. Build-to-Suits are also available on the 86 acre campus.

