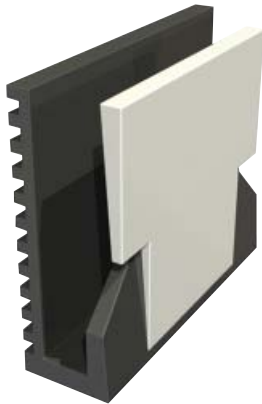


GLASSWEDGE™ DRY GLAZE SYSTEM - Patent Pending

GlassWedge™ Isolator

The patented GlassWedge™ System consists of a high impact plastic wedge and a high strength Aluminum Wedge. The GlassWedge™ provides the installer with a simpler, cleaner method of setting tempered glass panels in base shoe moulding.



Setting Chisel
A42-0020

1/2" Glass

Part#	Description
A42-0014-4	Package of Four
A42-0014-1	Single Unit

3/4" Glass

Part#	Description
A42-0015-4	Package of Four
A42-0015-1	Single Unit

Easy Installation



Place isolators onto the bottom of the glass panel.

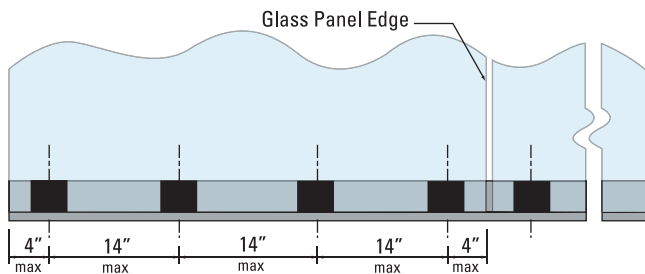


Tap the aluminum wedge into place using the special chisel available.

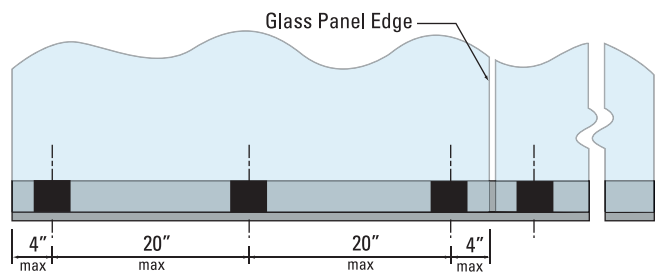


Check plumb then drive the aluminum wedge to locked position.

GLASSWEDGE™ SPACING GUIDELINES



System for 200 lb. point load with 4 × safety factor
14" center-to-center maximum with
4" maximum from center to glass edge.



System for 200 lb. point load with 2 × safety factor
20" center-to-center maximum with
4" maximum from center to glass edge.