

# NEW SHOWER PRODUCTS

**M**MORSE  
INDUSTRIES  
An  Company



## STANDARD HINGES

FOR 3/8" OR 1/2" GLASS

Solid brass construction with electroplated finish. Standard hinges are designed to accommodate 3/8" to 1/2" glass. Each pair supports up to 80lbs and door widths 28" or less. Standard finishes include bright chrome, brushed nickel, and oil rubbed bronze. Each hinge comes with gaskets, fasteners, and fabrication template.



### Square Edge Wall Mount Short Back Plate

Part # C50-0010



### Beveled Edge Wall Mount Offset Plate with Inset

Part # C50-0024

## JUNIOR SIZED HINGES & CLAMPS

FOR 1/4" OR 5/16" GLASS

Solid brass construction with electroplated finish. Junior sized hinges are designed with the same high quality features as our standard line, but are reduced in size to accommodate 1/4" to 5/16" glass. Each pair supports up to 62 lbs and door widths 28" or less. Standard finishes include bright chrome, brushed nickel, and oil rubbed bronze. Each hinge comes with gaskets, fasteners, and fabrication template.



### Junior Square Edge Wall Mount Full Back Plate

Part # C50-0015



### Junior Square Edge Glass Mount 180°

Part # C50-0017



### Junior Square Edge Wall Mount Offset Back Plate

Part # C50-0016



### Junior Fixed Panel Clamp Square Edge Rounded Corners

Part # C50-0039

## HEAVY DUTY HINGES

FOR 1/2" OR 3/8" GLASS

Solid brass construction with electroplated finish. Our heavy duty hinges are designed specifically for 1/2" glass heavy door applications, however, they can also be used with 3/8" glass. Each pair supports up to 110 lbs and door widths of 36" or less. Standard finishes include bright chrome, brushed nickel, and oil rubbed bronze. Each hinge comes with gaskets, fasteners, and fabrication template.



### Beveled Edge Wall Mount Offset Back Plate with Inset

Part # C50-0019



### Beveled Edge Wall Mount Full Back Plate with Self-Adhesive Gasket and Inset

Part # C50-0023



### Square Edge Wall Mount Full Back Plate with Self-Adhesive Gaskets with Inset

Part # C50-0021



### Large Beveled Edge Wall Mount Hinge Short Back Plate with Self-Adhesive Gasket

Part # C50-0029

## PULLS & TOWEL BARS

FOR 1/4" TO 1/2" GLASS

Morse Industries shower pulls are constructed of 1/2" stainless steel tubing with electroplated finishes that match the rest of our shower line. Standard finishes include bright chrome, brushed nickel, and oil rubbed bronze. All pulls include plastic gaskets and bushings that guard against any direct metal to glass contact.



### 6" Round Back-to-Back Pull with removable washer

Part # C60-0006



### 6" Square Back-to-Back Pull

Part # C60-0066



### 8" Round Back-to-Back Pull with removable washer

Part # C60-0008



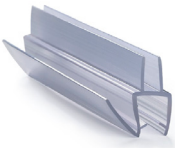
### 8" Square Back-to-Back Pull

Part # C60-0056



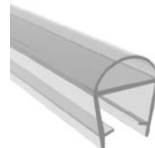
## FRAMELESS SHOWER WIPES & SEALS

Our wipes and seals are made from the highest quality polycarbonate, silicone, and/or vinyl for maximum clarity and durability.



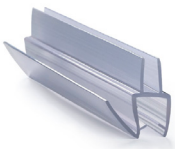
### 98" Co-Extruded Bottom Wipe with Drip Rail for 3/8" Glass

Part # V11-0020



### 98" Clear Bulb Seal for 3/8" Glass

Part # V11-0050



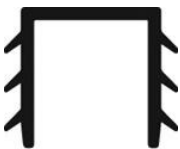
### 98" Co-Extruded Bottom Wipe with Drip Rail for 1/2" Glass

Part # V11-0021



### 98" Clear Silicone Bulb Seal for 3/16" Gap

Part # V11-0055



### Vinyl Header Insert for 3/8" Glass

Part # V11-0030



### 98" Clear Vinyl Double Fin Seal with Applied Tape, 5/16" maximum

Part # V11-0060

## NEW SHOWER PRODUCTS 2018

Since 1982, Morse Industries has been providing industry professionals with top-quality architectural products. Learn more about our shower systems and hardware, railing systems, aluminum & vinyl extrusions, and custom capabilities.

Call us toll free @ **800.325.7513**  
See us online @ [www.morseindustries.com](http://www.morseindustries.com)



WORKING SOLUTIONS IN RAILING, SHOWER & ARCHITECTURAL METALS · SINCE 1982