

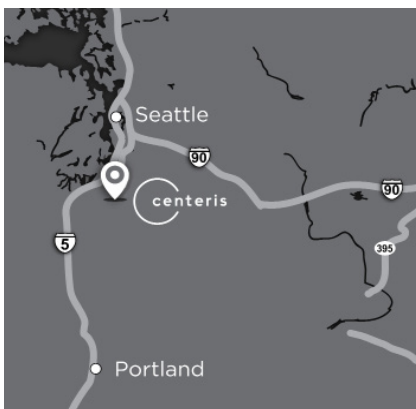
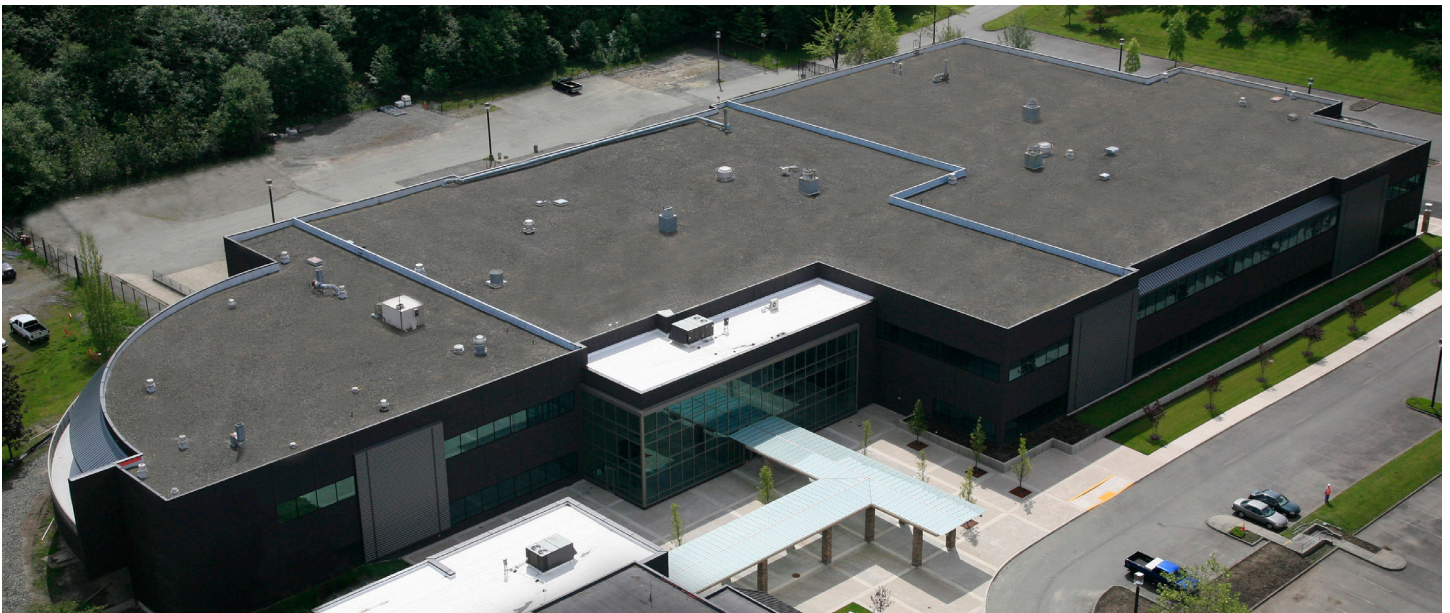


SH2 POWERED SHELL



Offering high power capacity and scalability, SH2 is a powered shell ready to be built out to your specifications. Highly flexible, with 80,000-174,000 square feet of fully configurable white space available for your exact mission critical requirements.

SH2 provides all the benefits of being located on the private 86-acre South Hill campus including robust connectivity and a gateway to Asia via the Transpacific Hub®. Centeris makes fast deployment possible with a 12–24 MW build-out commissioned in 9–12 months.



BUILD-TO-SUIT

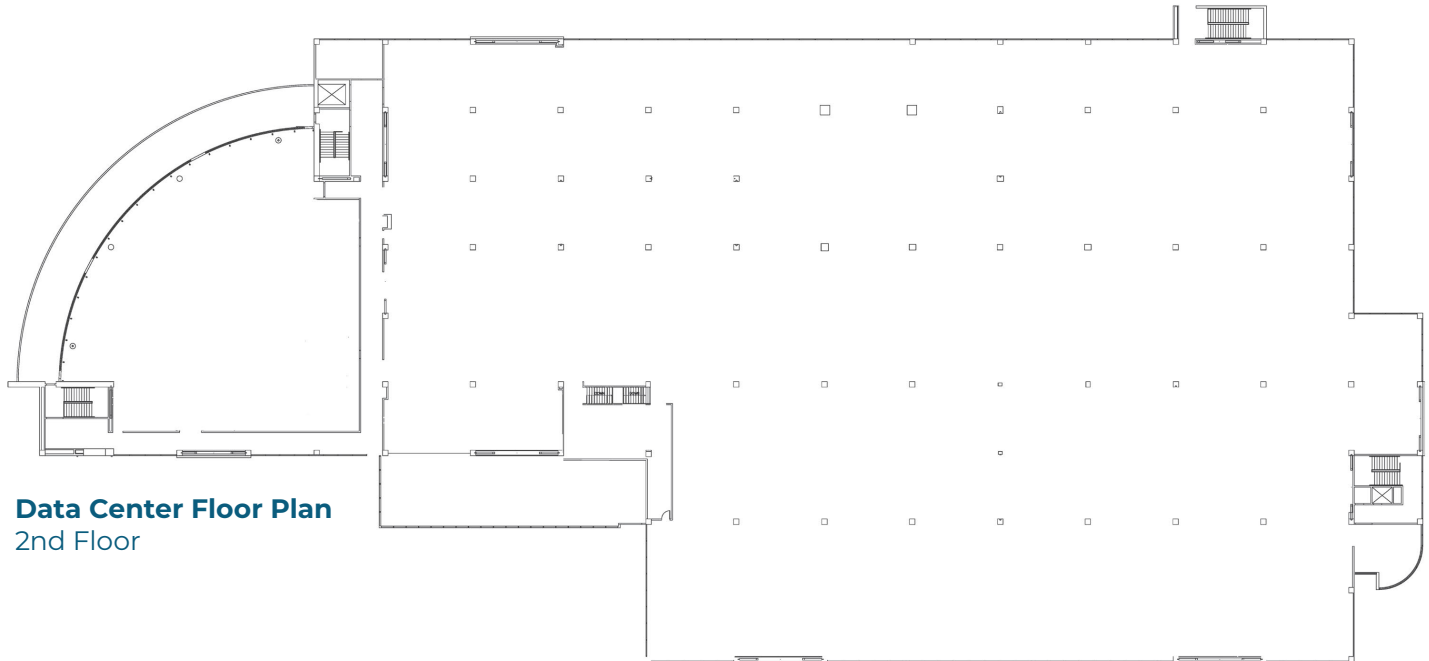
WWW.CENTERIS.COM/TOUR

FEATURES INCLUDE:

- FULLY CONFIGURABLE TO CLIENT'S SPECIFICATIONS
- 12 MW - 24 MW BUILD-OUT COMMISSIONED IN 9 - 12 MONTHS
- STRATEGICALLY LOCATED IN PUYALLUP, WASHINGTON

FACILITY SPECIFICATIONS

Offering high power capacity and scalability, SH2 is a completed powered-shell ready to be built out to client specifications.



Data Center Floor Plan
2nd Floor

WHITE SPACE

Two floors
80,000-174,000 square feet of white space available

POWER

Up to 30 MW available today
50 MW dedicated substation on-site; expandable in 25 MW increments
Dual feeds from independent utility substations
Low power cost

MECHANICAL

MEP (Mechanical/Electrical/Plumbing) conceptual design completed

CONNECTIVITY

Carrier neutral with Level 3 (North & South), Comcast, CenturyLink, Zayo, Verizon, Click! and Wave currently available through diverse and redundant pathways
Dark fiber is in place between Centeris and Westin Building Exchange (WBX)

SUSTAINABILITY

USGBC LEED certification in process
Electricity generated from hydroelectric and wind sources

FLEXIBILITY

Can be developed to exact client specs with fast deployment

SECURITY

24 x 7 manned security, CCTV, biometric and card controls, mantraps, visitor and shipment screening, perimeter and individual building security fencing available

LOCATION ADVANTAGES

Key access to regional and transpacific cable systems
Located 525 feet above sea level

OTHER BENEFITS

Owner financing available for fast track client build-out and deployment
Easy access to Seattle, Portland, Vancouver BC and SeaTac International Airport

