



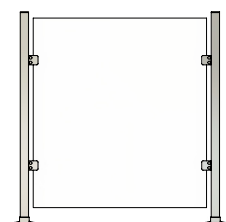
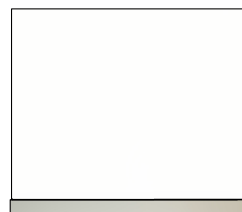
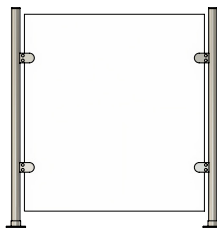
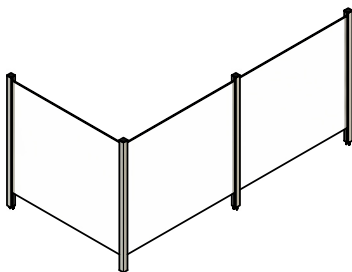
SAFETY SHIELD SYSTEMS

For 38 years, customers have relied on Morse Industries for top quality products and excellent customer service. Morse Industries is excited to partner with installers to supply Safety Shield Systems. These systems provide a clear barrier to keep both employees and customers safer in transactional environments. Now, more than ever, implementing additional safety measures proves to be essential for many businesses.

Safety Shield Systems are compatible with 1/4" to 1/2" plexiglass, tempered glass or polycarbonate infill*. We offer solutions that allow money and small items to pass underneath or provide a solid barrier. Systems are offered in a variety of materials and finishes. Please contact us for additional details.

PRODUCT FEATURES:

- Compatible with tempered glass, plexiglass, polycarbonate and other infills
- Available in prefabricated kits
- Individual components available
- Individual components available in bulk
- Hardware included
- Easy to install



WWW.MORSEINDUSTRIES.COM | 800.325.7513

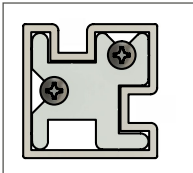
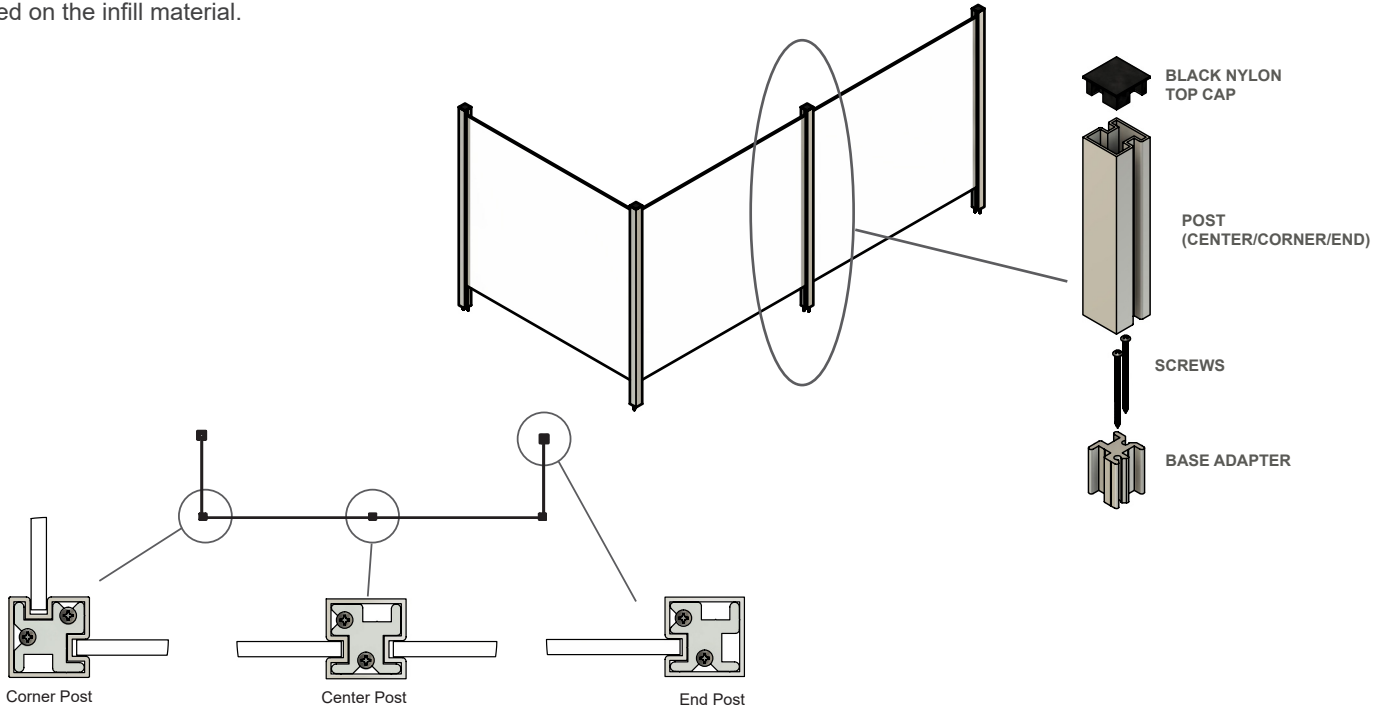
MORSE INDUSTRIES • WORKING SOLUTIONS IN RAILING, SHOWER & ARCHITECTURAL METALS • SINCE 1982

**Refer to individual product specifications for infill size details*

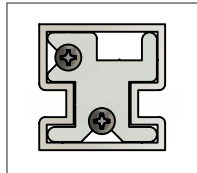


PARTITION POST SAFETY SHIELD

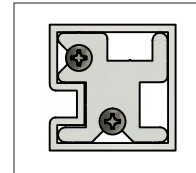
The Partition Post Shield not only provides the ability to pass money and small objects below the infill if needed, but can also be mounted with the infill flush to the surface so no gap remains. The posts on this shield are made of high-quality extruded aluminum components. The shield works with a variety of infill material, accommodating a thickness of 1/4". No fabrication is needed on the infill material.



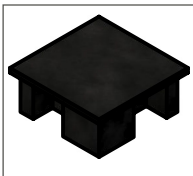
CORNER POST
PART #: A55-1000



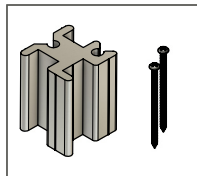
CENTER POST
PART #: A55-2000



END POST
PART #: A55-3000

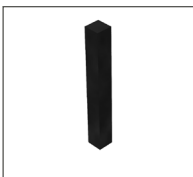


BLACK NYLON TOP CAP
PART #: A55-4000



BASE ADAPTER
(2) SCREWS REQUIRED
PER BASE (Included)
PART #: A55-5100

Recommended Accessories



GLASS SETTING BLOCK
PART #: V55-1000
For adjusting gap under infill



GORILLA SUPER GLUE
PART #: G55-1000
For attaching posts, top cap, and setting block



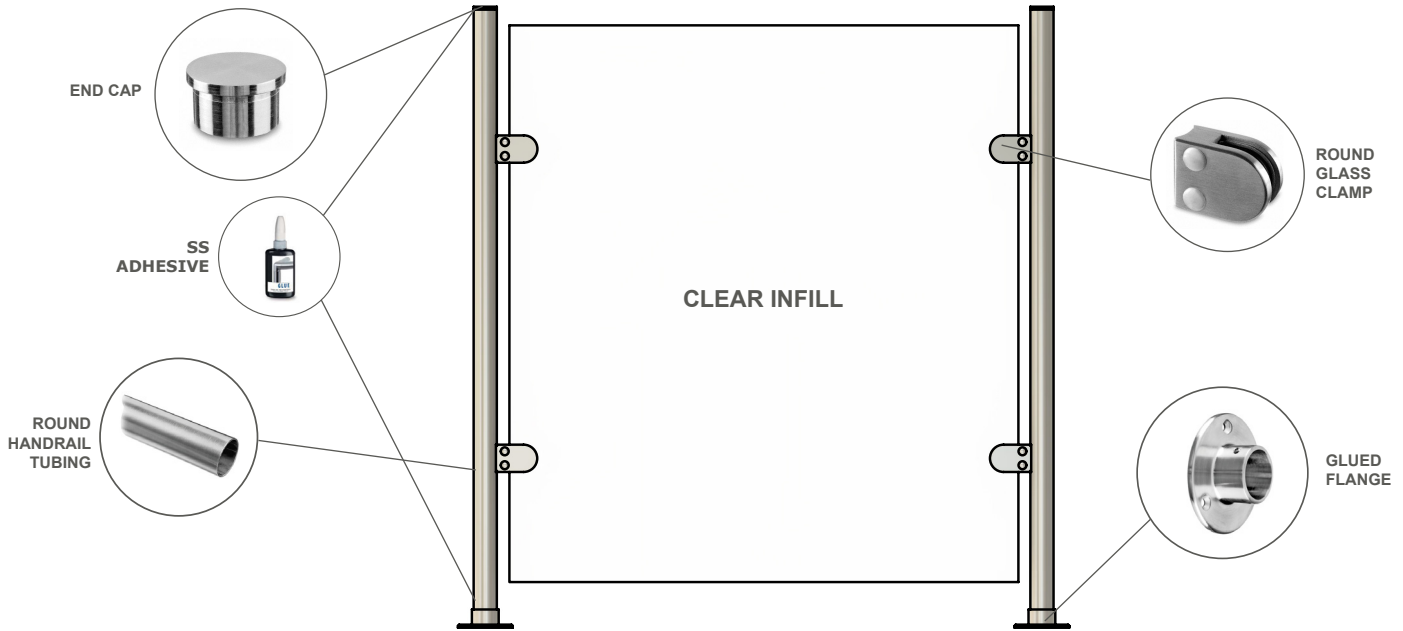
SHEET METAL SCREW
PART #: A55-6500
For locking post to base

Available in Super Satin Anodized • Custom Finishes also Available



ROUND POST SAFETY SHIELD

The Round Post Shield provides the ability to pass money and small objects below the infill. The posts on this shield are made of stainless steel which creates a high end appearance. The Round Post Shield works with a variety of infill material, accommodating thicknesses from 1/4" to 3/8". Posts have 1 1/2" diameter. No fabrication is needed on the infill material for the clamps.



PRODUCT FEATURES:

- Compatible with tempered glass, plexiglass, polycarbonate and other infills
- Accommodates infill thicknesses of 1/4" to 3/8"
- No fabrication of the infill material needed for clamps
- 1 1/2" Diameter 40" Tall Posts
- Easy to install



END CAP
(2) Ø1.5" GLUED CAP FOR TOP OF POSTS

Part #: M13-0732-038-12



GLASS CLAMP
(4) ROUNDED GLASS CLAMPS

NOTE: (2) gaskets are required for each clamp

Part #: M13-2512-038-12



ROUND POST
(2) Ø1.5" ROUND POSTS 40" LONG WITH .078" WALL THICKNESS, PREDRILLED

304 Stainless Steel
#4 Brushed Finish
Part #: M43-0900-038-12



BASE FLANGE
(2) Ø1.5" GLUED BASE FLANGE FOR BOTTOM OF POSTS

Part #: M13-0505-038-12



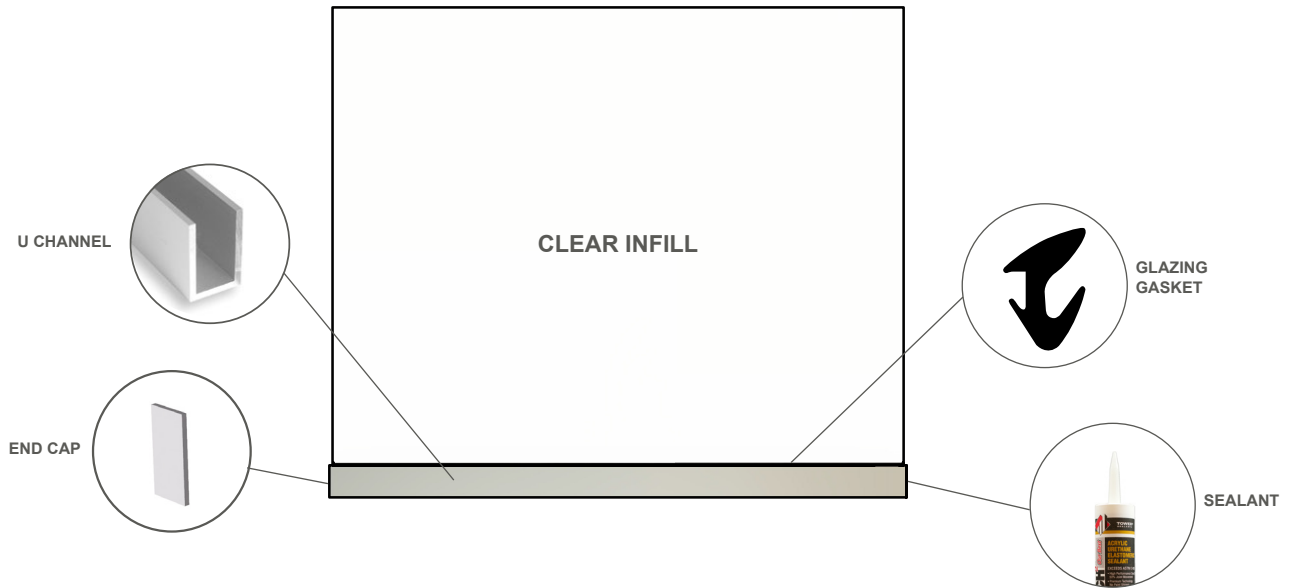
STAINLESS STEEL ADHESIVE GLUE
QUICK SETTING, HIGH STRENGTH, STAINLESS STEEL ADHESIVE

Part #: R19-1331-000-00 (Sold seperately - Each bottle covers around 10 installations)



EDGE-SUPPORTED SAFETY SHIELD

The Edge-Supported Shield utilizes a U-Channel for support, and does not require vertical posts. This system provides a solid barrier with no gaps. Customizable lengths up to 20'. The aluminum channel works with a variety of infill materials and accommodates thicknesses from 3/8" to 1/2". Multiple finishes and claddings are available.



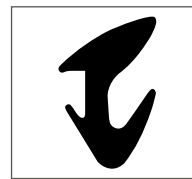
PRODUCT FEATURES:

- Compatible with tempered glass, plexiglass, polycarbonate and other infills
- Accommodates infill thicknesses of 3/8" to 1/2"
- Customizable up to 20'
- Hardware included
- Easy to install



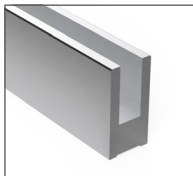
TOWERTECH2 CLEAR ARCHITECTURAL SEALANT
(1) MODIFIED URETHANE ACRYLIC

Part #: G42-5950CLR



GLAZING GASKET
(1) GASKET FOR 3/8" GLASS PLACE ON EACH SIDE OF GLASS

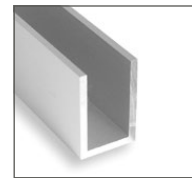
Part #: V50-0601BKA



LOW PROFILE BASE CHANNEL
(1) 2-3/4" X 1-3/8" CHANNEL
MILL FINISH - CLADDING AVAILABLE IN SATIN SILVER OR BRUSHED STAINLESS
CAN BE PAINTED OR POWDER COATED

Part #: A42-0064AEY10C

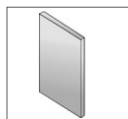
OR



ALUMINUM U CHANNEL
(1) 1" X 2" X .125" CHANNEL
SATIN SILVER OR BRUSHED STAINLESS ANODIZED

Part #: A40-1402BSA10

OPTIONAL END CAPS:



(2) END CAP
 Part #: A17-0064

NOTE: For use with Part #: A42-0064AEY10C Only

OR



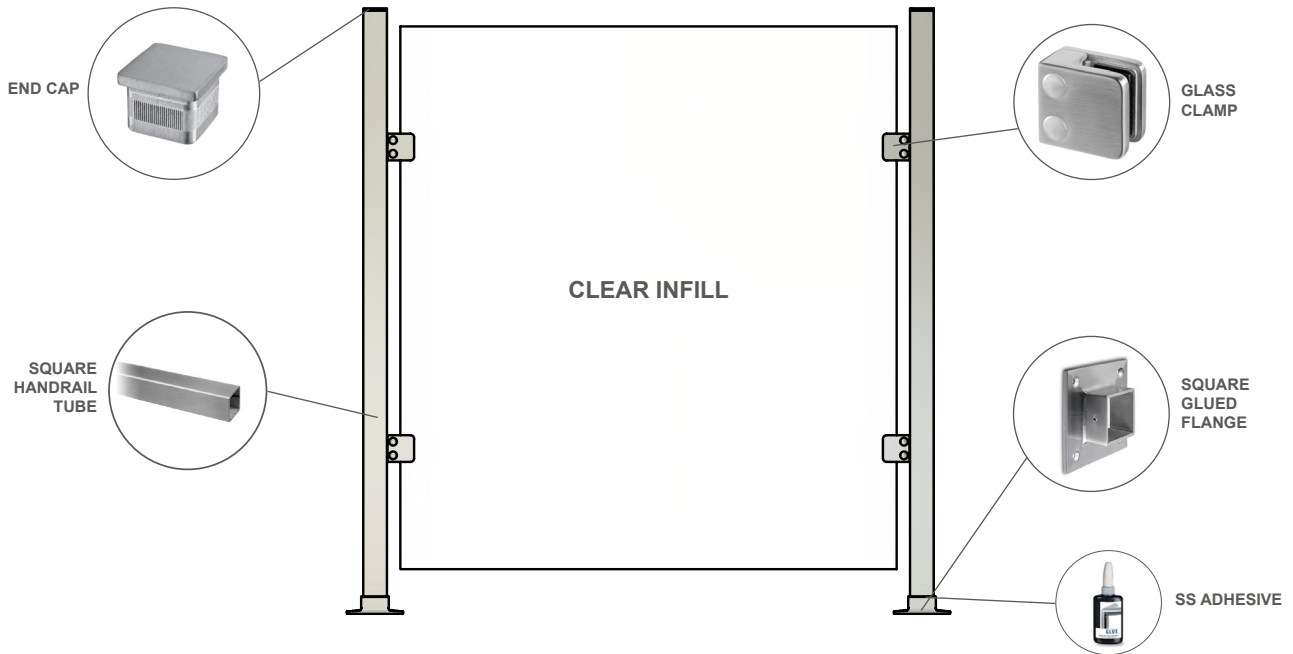
(2) END CAP
 Part #: A17-1402

NOTE: For use with Part #: A40-1402BSA10 Only



SQUARE POST SAFETY SHIELD

The Square Post Shield provides the ability to pass money and small objects below the infill. The posts on this shield are made of stainless steel which creates a high end appearance. The Square Post Shield works with a variety of infill material, accommodating thicknesses from 1/4" to 3/8". No fabrication is needed on the infill material for the clamps.



PRODUCT FEATURES:

- Compatible with tempered glass, plexiglass, polycarbonate and other infills
- Accommodates infill thicknesses of 1/4" to 3/8"
- No fabrication of the infill material needed for clamps
- Hardware included
- Easy to install



END CAP
(2) 1.57" SQUARE END CAPS FOR TOP OF POSTS

Part #: R13-5728-040-12



GLASS CLAMPS
(4) SQUARE GLASS CLAMPS

NOTE: (2) gaskets are required for each clamp

Part #: M13-2110-000-12



SQUARE POST
(2) 1.57" x 1.57" POSTS 40" LONG .078" WALL THICKNESS, PREDRILLED
304 Stainless Steel
#4 Brushed Finish
Part #: R13-4900-040-12



BASE FLANGE
(2) SQUARE GLUED BASE FLANGES FOR BOTTOM OF POSTS

Part #: R13-4505-040-12



STAINLESS STEEL ADHESIVE GLUE
QUICK SETTING, HIGH STRENGTH, STAINLESS STEEL ADHESIVE
Part #: R19-1331-000-00 (Sold separately - Each bottle covers around 10 installations)

WWW.MORSEINDUSTRIES.COM | 800.325.7513



Northwest Distribution Facility
Morse Industries Headquarters
25811 74th Avenue South
Kent, WA 98032

Southwest Distribution Facility
Morse Industries
3080 Enterprise Avenue, Suite A Brea,
CA 92821

Central U.S. Distribution Facility
Morse Industries
4041 N. Santa Fe Ave.
Oklahoma City, OK 73118

Mid-Atlantic Distribution Facility
Morse Industries
1630 Old Dunbar Road
West Columbia, SC 29172